









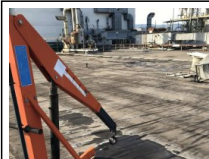


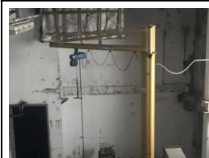
LOTTI

	#39: Bobinatrice Riavvolgi Filati	Anno: 2005 Matricola: C2511
	#40: Fresatrice Misal	Marca: Misal
	#41: N. 74 Armadietti Metallici	
	#42: Box in Alluminio	
	#43: Box Insonorizzato in Ferro	
	#44: Box ad Uso Ufficio - A	
	#45: Box ad Uso Ufficio - B	
	#46: Spazzatrice Industriale Dulevo 90	Marca: Dulevo Modello: 90
	#47: Idropulitrice Oerlikon	
	#48: Fasciapallet Robopac	Marca: Robopac

	#49: Fasciapallet Rotoplat	Marca: Rotoplat
	#50: N. 19 Casse in Ferro	
	#51: Contenitori e Tramoggette	
	#52: N. 5 Silos per Stabilizzanti	
	#53: N. 5 Contenitori a Tramoggia	
	#54: Attrezzatura da Lavoro - A	
	#55: Attrezzatura da Lavoro - B	
	#56: Attrezzatura Laboratorio e Minuteria	
	#57: Arredi e Attrezzatura da Lavoro - A	
	#58: Arredi e Attrezzatura da Lavoro - B	



#59: Attrezzature Logistica - A



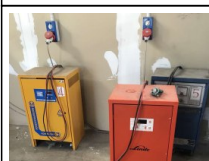
#60: Attrezzature Logistica - B



#61: Attrezzature Logistica e Carrelli Elevatori



#62: Attrezzature da Lavoro e Strumenti di Misura



#63: N. 4 Caricabatterie per Muletti