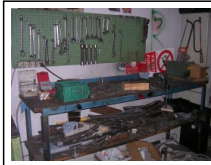


LOTS

	#1: Torpedo Noseda Advanced TS-A 500/2000	Make: Noseda Model: Advanced TS-A 500/2000	EUR 0,00
	#2: Torpedo Noseda Advanced TS-A 300/2000	Make: Noseda Model: TS-A 300/2000	EUR 0,00
	#7: Frame 6 Viscose John Jardine	Make: John Jardine	EUR 0,00
	#8: Loom 9 Mantilla Silk John Jardine	Make: John Jardine	EUR 0,00
	#9: Frame 62 Viscose John Jardine	Make: John Jardine	EUR 0,00
	#10: Loom 15 J.Quillet silk	Make: J. Quillet	EUR 0,00
	#11: Loom 14 J.Quillet silk	Make: J. Quillet	EUR 0,00
	#13: Frame 8 Bourd Viscose John Jardine	Make: John Jardine	EUR 0,00
	#14: Loom 43 Cotton Wallis Longden	Make: Wallis Longden	EUR 0,00
	#15: Frame 44 Cotton Wallis Longden	Make: Wallis Longden	EUR 0,00

	#16: Frame 3 J. Quillet Silk	Make: J. Quillet	EUR 0,00
	#17: Various Work Equipment		EUR 0,00
	#27: Forklift Transpallet and Cart		EUR 0,00
COMBINATIONS			
Yarn Processing - Machinery, Equipment and Company Know How			
EUR 22.000,00			
	#4: Frame 45 Trang Wallis Longden	Make: Wallis Longden	
	#5: Frame 66 Viscose John Jardine	Make: John Jardine	
	#6: Loom 68 John Jardine Cotton	Make: John Jardine	
	#12: Frame 64 Viscose John Jardine	Make: John Jardine	
	#18: Machinery and Equipment for Textile Processing		
	#19: Furniture and Work Equipment		



#20: N. 2 Workshop Benches



#21: Ltf Lathe with Lifter and Cabinet

Make: Ltf



#22: Sewing Machines and Work Equipment



#28: Know How, Drawings, Caps and Cartons

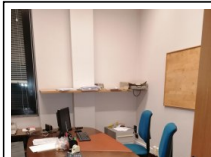


#33: N. 2 John Jardine Winders

Make: N. 2 Bobinatrici John Jardine

Warehouse for Fabrics, Work Equipment and Office Furniture

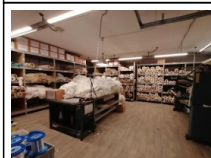
EUR 45.000,00



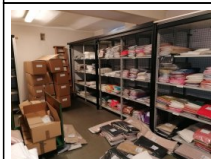
#26: Work Equipment and Office Furniture



#29: Bordi Collection Fabrics Warehouse



#30: Greggi Collection Fabrics Warehouse



#31: Rebrodè Lace and Embroidery Collection Fabrics Warehouse



#32: Uniti Collection Fabrics Warehouse