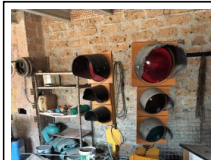


LOTTI



#12: N.2 Semafori Stradali da Cantiere



#13: N.3 Lampeggianti Stradali



#14: N.6 Birilli Delimitazione Traffico



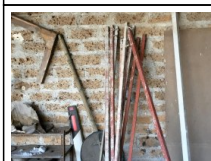
#15: N.7 Montascala



#16: Rampa da Carico



#17: Quadro Elettrico da Cantiere IMER



#18: Attrezzatura da Tramezzi



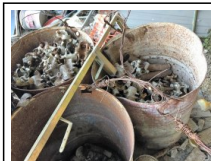
#19: N.5 Scivoli per Calcinacci



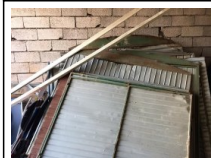
#20: Segnali Stradali Vari



#21: Carriola



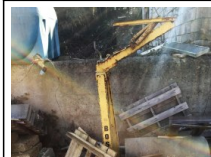
#22: Giunti per Ponteggi



#23: N.3 Box in Lamiera



#24: Quadro Elettrico



#25: Forca per Gru BOSCARO



#26: N.19 Basamenti per Recinzioni



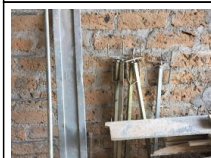
#27: N.11 Pannelli per Recinzione



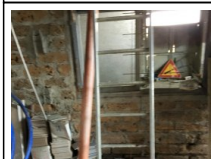
#28: N.1 Bancale per Solai



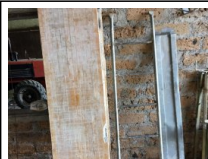
#29: Pannelli in Legno



#30: N.5 Parapetti



#31: Scala in Alluminio



#32: Scala in ferro da Ponteggio



#33: Tavole da Ponteggio